

LAMBSWOOL RUG COLOUR CHART



COLOUR VARIATION

We are dealing with a natural product so colour variation should be expected. The Colour Chart is meant to be a rough guide only as photography and screen settings can affect shade accuracy. We recommend that you request free samples of the colour(s) you are interested in as they will give a better indication of the actual shade

Index

[Page 1 – Index](#)

[Page 2 – Greys / Blacks](#)

[Page 3 – Naturals](#)

[Page 4 – Reds](#)

[Page 5 – Greens](#)

[Page 6 – Blues](#)

[Page 7 – Browns](#)

GREYS / BLACKS

[<<< Back to Index](#)

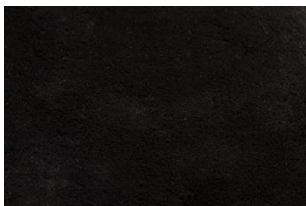
Anthracite



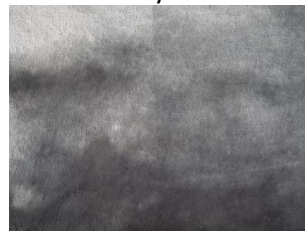
Purple Silk



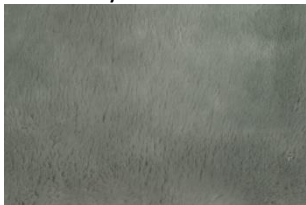
Black



RR Dark Grey



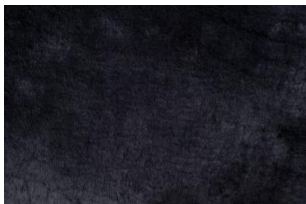
Blue Grey



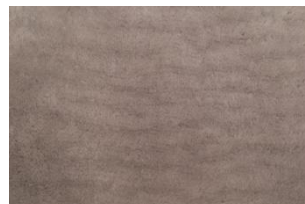
Seashell



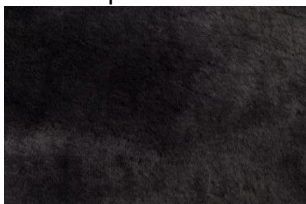
Brunel



Stratos



Dark Porpoise



French Navy



NATURALS

[<<< Back to Index](#)

Cashew



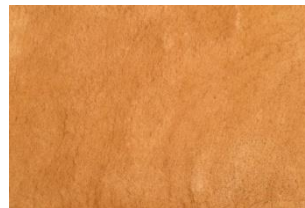
Oatmeal



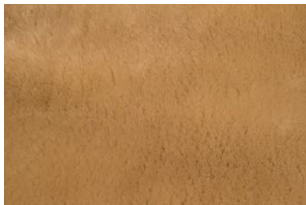
Cognac



Ochre



Corn Silk



Portland



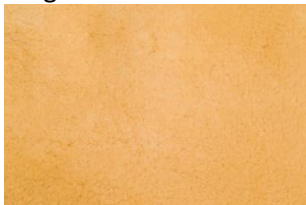
Deep Fawn



Sand



Magnolia



Savanah



Moccasin



REDS

[<<< Back to Index](#)

Ardent



Dark Cherry



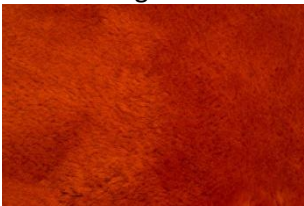
Burgundy



Fireglow



Burnt Orange



Magenta



Consort



Mandarin



Cranberry



St. James



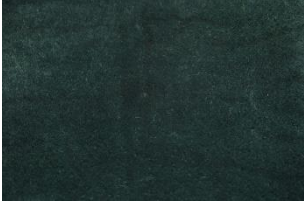
Dahlia Red



GREENS

[<<< Back to Index](#)

Conifer



Dynamic Green



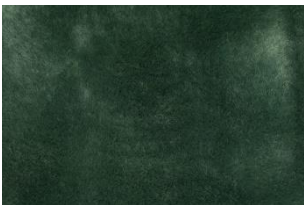
Laurel



Privet



RR Green



Willow



BLUES

[<<< Back to Index](#)

Ambassador Blue



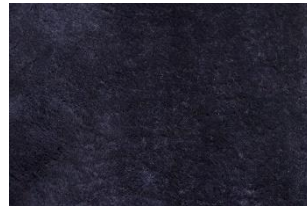
Mountain Blue



Blue 98



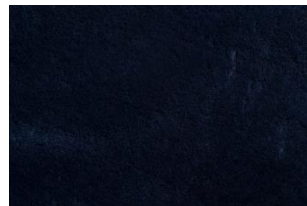
Nautic



Cobalto



Portofino



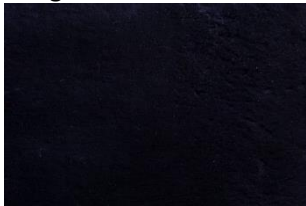
Dark Blue



Deep Purple



Indigo



BROWNS

[<<< Back to Index](#)

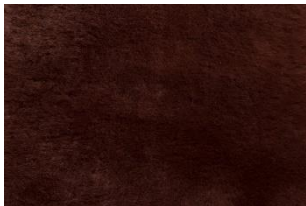
Burnt Oak



Taupe



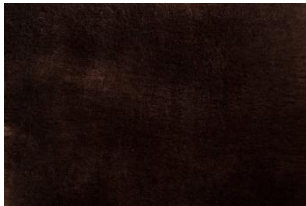
Cocoa



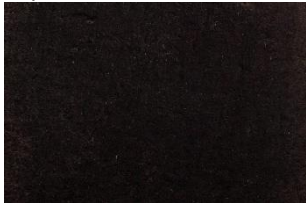
Fawn Brown



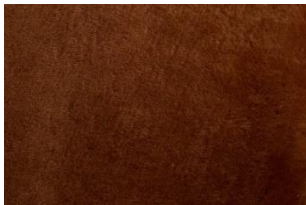
Chestnut



Espresso



Newmarket



Spice

